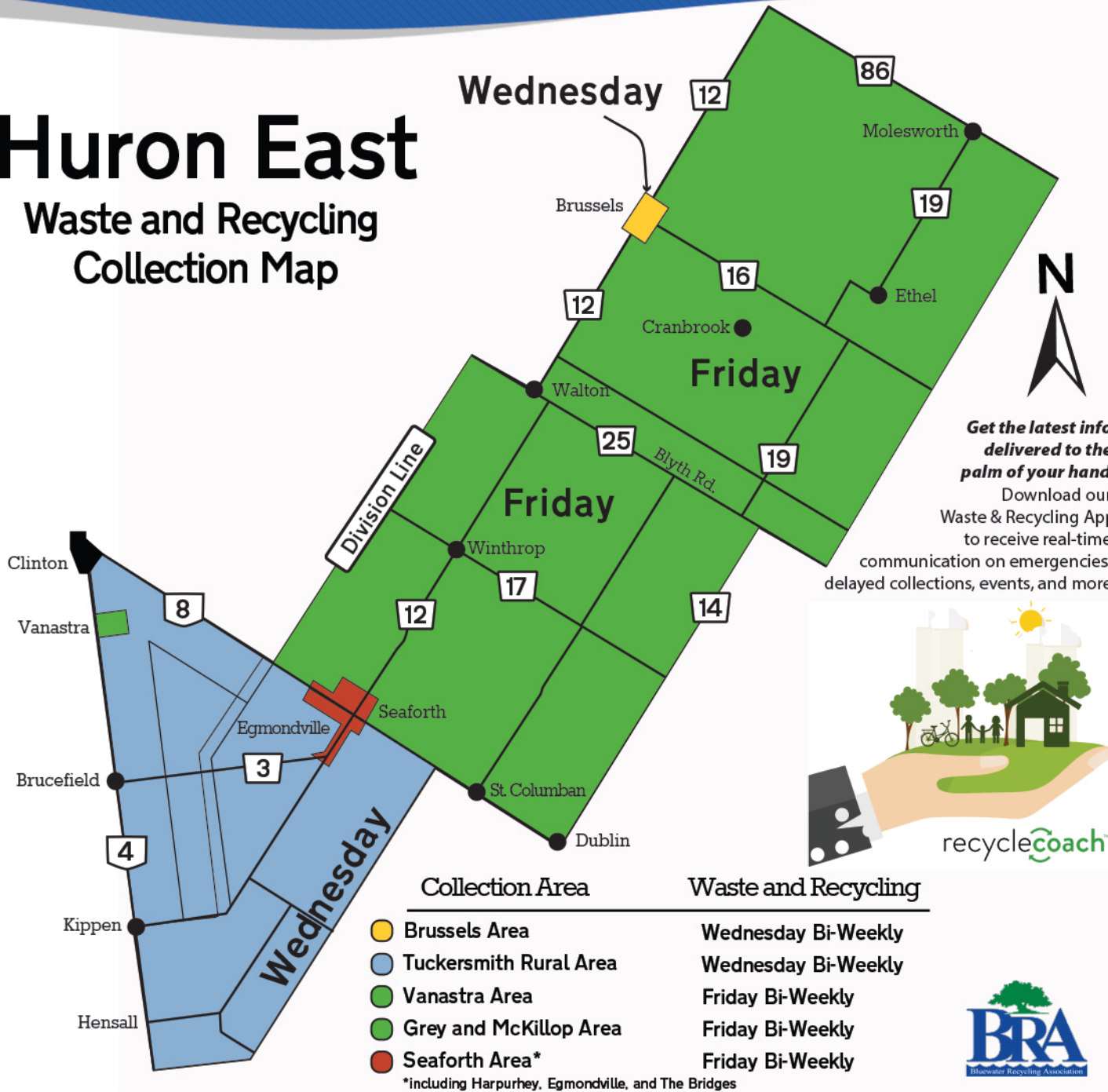


Huron East Waste and Recycling Collection Map



Get the latest info delivered to the palm of your hand!
Download our Waste & Recycling App to receive real-time communication on emergencies, delayed collections, events, and more.



recyclecoach



Collection Area	Waste and Recycling
Brussels Area	Wednesday Bi-Weekly
Tuckersmith Rural Area	Wednesday Bi-Weekly
Vanastra Area	Friday Bi-Weekly
Grey and McKillop Area	Friday Bi-Weekly
Seaforth Area*	Friday Bi-Weekly

*Including Harpurhey, Egmondville, and The Bridges



Stop Wishcycling

The items on this page are the only items we should see in your recycling bin. Many households “wishcycle” when they put something in the recycling bin without knowing if it's actually recyclable. People believe that most items can be recycled (which simply isn't true). Placing the wrong items in the recycling bins increases the cost of the program, lowers the value of the remaining recyclables, and affects the safety of our employees. Just because something is made of paper, metal, plastic, or glass, does not mean it is recyclable even if it has the recycling symbol on it. If you are unsure, please ask us at info@bra.org or 1-800-265-9799, or visit www.bra.org **When in doubt, leave it out!**

Printed Paper	Printed Paper	Paper Packaging	Plastic Bottles and Packaging	Metal Cans
Daily News	Phone Books	Cardboard	PET Bottles&Jars	Beverage Can
Newspaper&insert	Phone Books	Cardboard	PET Bottles&Jars	HDPE Bottles
Magazines	Junk Mail	Boxboard	PET Thermoforms	HDPE Jars
Magazines	Junk Mail	Boxboard	PET Thermoforms	HDPE Jars
Office Paper	Catalogues	Kraft Paper	PET Clamshells	HDPE Tubs and Lids
Office Paper	Catalogues	Kraft Paper	PET Clamshells	HDPE Tubs and Lids
Envelopes	Brochures	Paper Cores	PET Jars	HDPE Pails
Envelopes	Brochures	Paper Cores	PET Jars	HDPE Pails
Soft Cover Books	Calendars	Moulded Pulp	PP Bottles	PE Bags
Soft Cover Books	Calendars	Moulded Pulp	PP Bottles	PE Bags
				Glass Bottles and Jars
				Clear and Coloured Bottles and Jars

These materials are acceptable in your recycling program.